



POLYTECHNIQUE
MONTRÉAL

LE GÉNIE
EN PREMIÈRE CLASSE

CIV6205

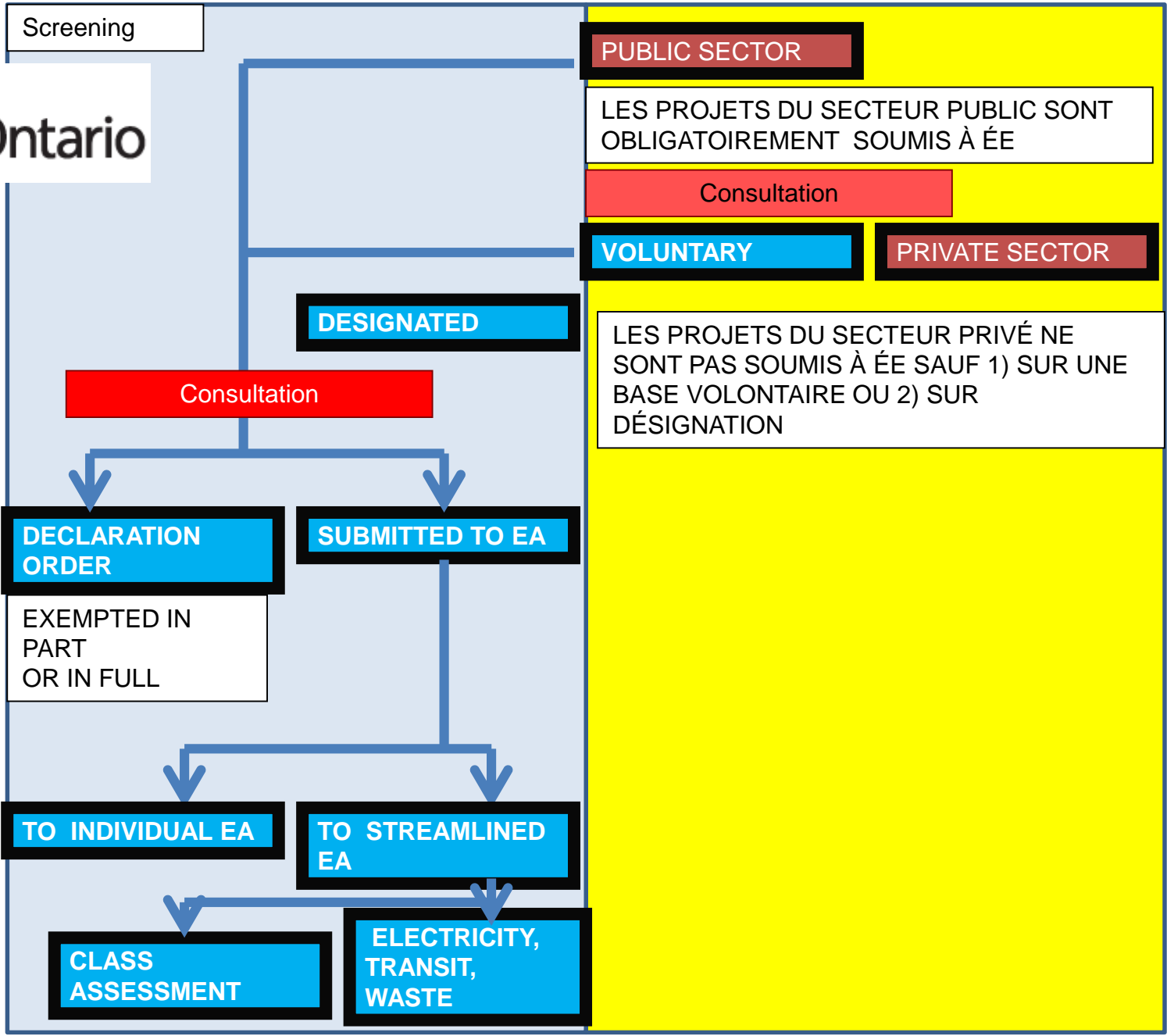
Impacts des projets
sur l'environnement

INTRODUCTION À LA QUESTION DE LA « CONSULTATION » OU DE LA « PARTICIPATION CITOYENNE » EN ÉVALUATION ENVIRONNEMENTALE

Département des Génies civil, géologiques et des mines
(CGM)

Michel A. Bouchard, Ph.D.





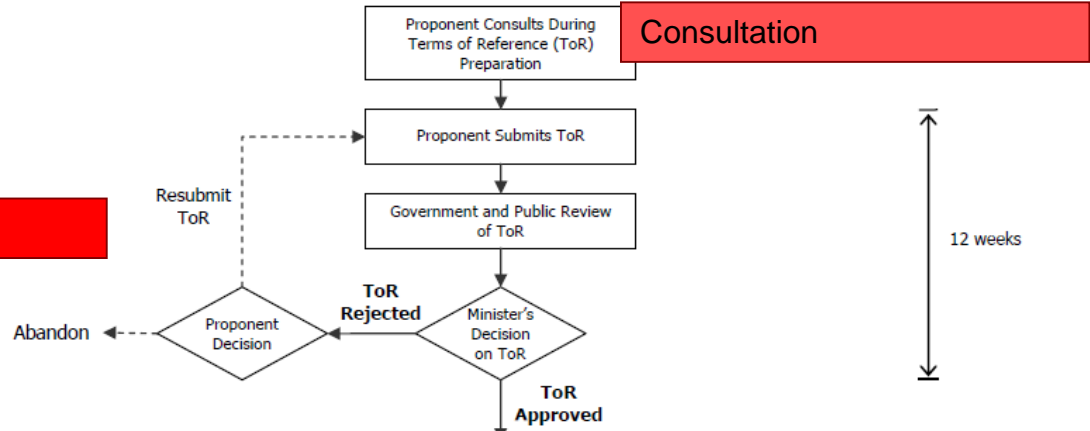
Environmental Assessment Process Timelines



Prescribed Deadlines
(Ontario Regulation 616/98)

Consultation

Consultation



* The Director may issue a Deficiency Statement. If the deficiencies are not remedied, the Minister may reject the environmental assessment.

① The Minister has three options: 1) refer all or part of application to the Tribunal; 2) make a decision; or, 3) refer to mediation.

② If referred to the Tribunal, the Minister has 28 days in which he or she may review the Tribunal decision. The Tribunal has the same decision options as the Minister (approve, approve with conditions, or refuse).

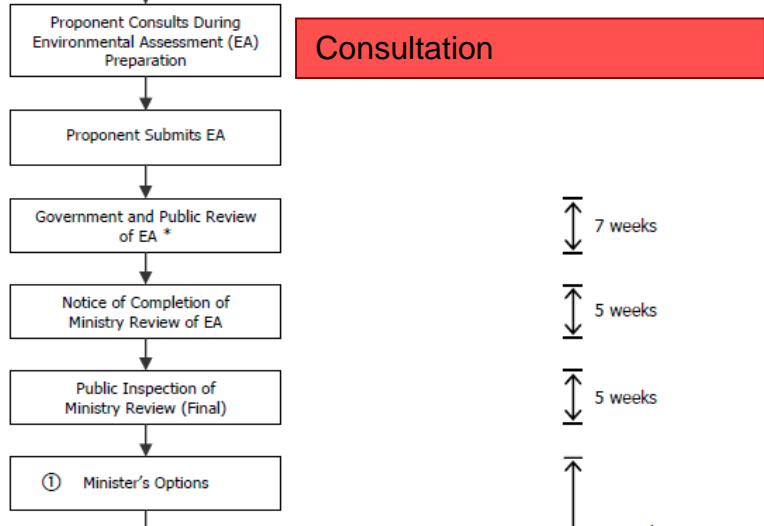
③ If referred to mediation, the Minister shall consider the mediator's report when making a decision.

Note: Self-directed Mediation may occur at any time. The Minister may refer an environmental assessment application to mediation (Referred Mediation) any time during the environmental assessment process (60 days maximum).

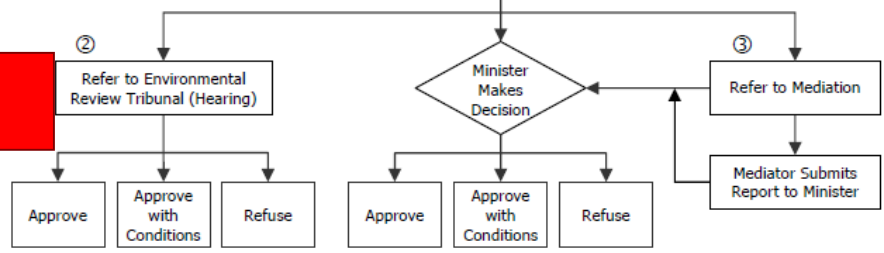
Consultation

Consultation

Consultation



Quasi-judicialisation





ENVIRONMENTAL ASSESSMENT ACT, 2000 INCORPORATED AS PART X SECTION 45-77

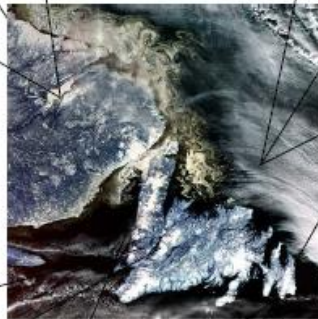
GUIDE to the ***ENVIRONMENTAL PROTECTION ACT***



GOVERNMENT OF
NEWFOUNDLAND AND LABRADOR
Department of Environment

ENVIRONMENTAL ASSESSMENT

... A Guide to the Process



Director
Environmental Assessment Division
Department of Environment and Conservation
PO Box 8700
St. John's NL A1B 4J6

Telephone: (709) 729-2562
Toll free: 1-800-563-6181
Fax: (709) 729-5518
Web site: www.gov.nl.ca/env

